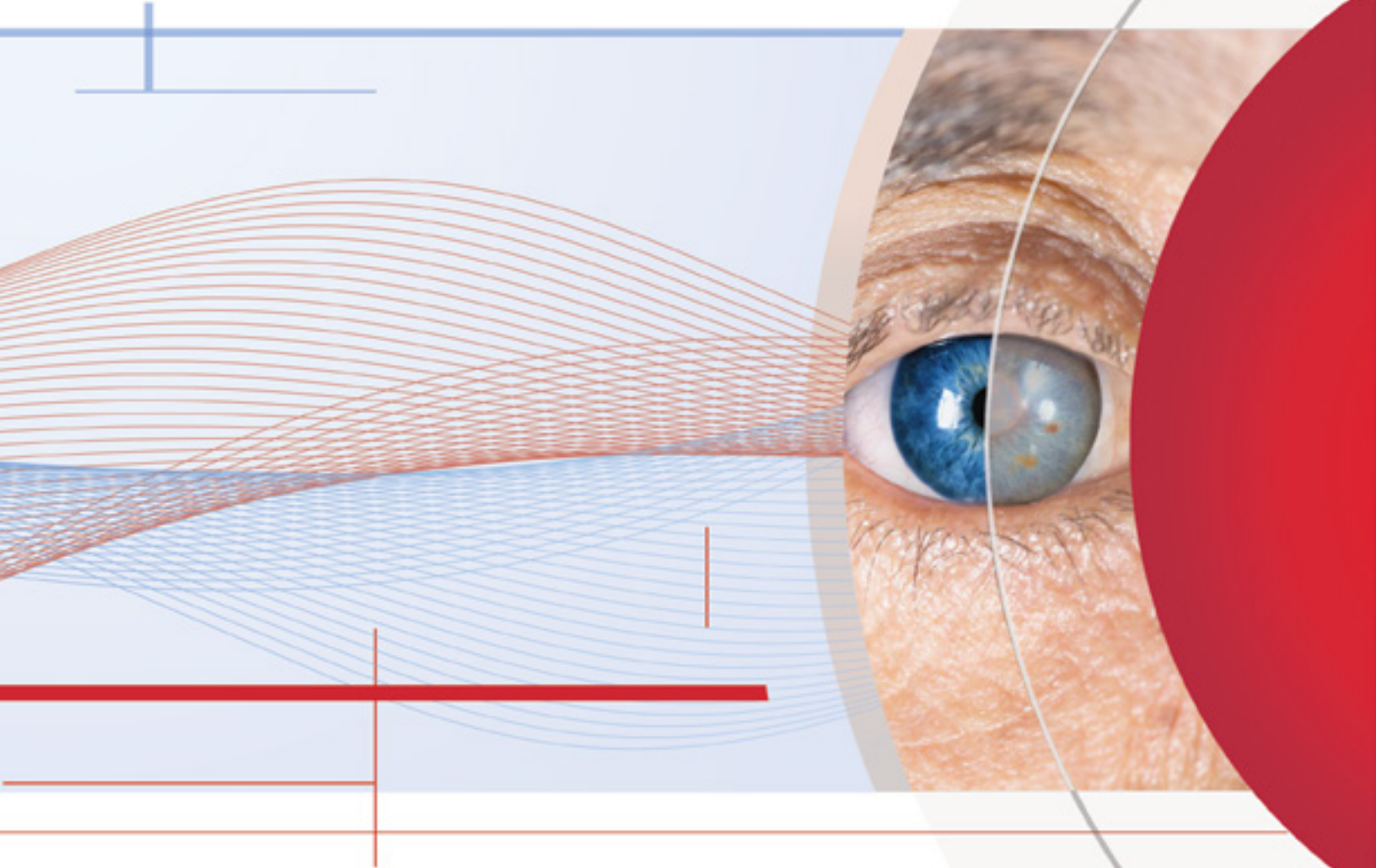
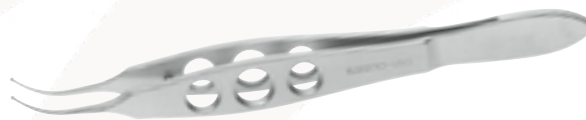
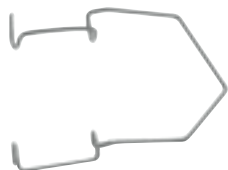


# Glaucoma Solutions



# Instruments for XEN®

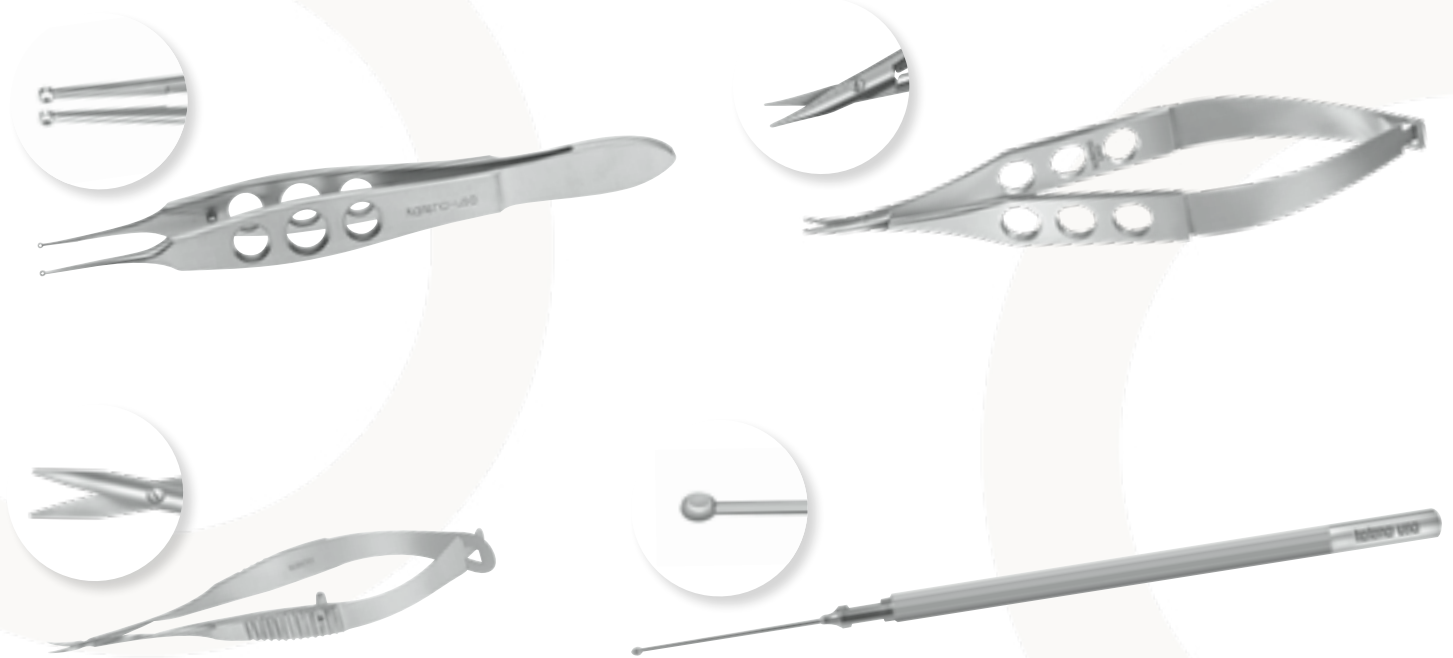
## MIGS - tools for XEN®



# Glaucoma Drainage Device Surgery

## Instruments & patch allografts

### Instruments



### Tutoplast® Patch Allografts

Processed patch allografts used to cover all tube shunts as part of glaucoma drainage device surgery.

#### Tutoplast® Pericardium

Description	Item #
1.5 x 1.5 cm	<a href="#">68250</a>
2 x 3 cm	<a href="#">68260</a>
4 x 5 cm	<a href="#">68252</a>
5 x 5 cm	<a href="#">68257</a>
6 x 12 cm	<a href="#">68254</a>
2 x 5 cm	<a href="#">68255</a>
1.0 x 2.5 cm	<a href="#">68256</a>
1.0 x 1.0 cm	<a href="#">68251</a>

#### Tutoplast® Sclera

Description	Item #
Whole	<a href="#">68332</a>
0.5 x 0.8 cm	<a href="#">68333</a>
0.6 x 1.0 cm	<a href="#">68337</a>
1 x 3 cm	<a href="#">68334</a>

#### Tutoplast® Clear Cornea

Description	Item #
1/2 Clear Cornea w/sclera	<a href="#">68330</a>
1/3 Clear Cornea w/sclera	<a href="#">68329</a>
1/4 Clear Cornea w/sclera	<a href="#">68328</a>

# Lenses

## Surgical, laser & diagnostic lenses



**Procedures:**  
SLT, ALT, XEN®, gonioscopy



**Procedures:**  
MIGS, goniotomy



**Procedures:**  
Trabeculectomy, some glaucoma drainage device surgeries



**Procedures:**  
Gonioscopic examination

